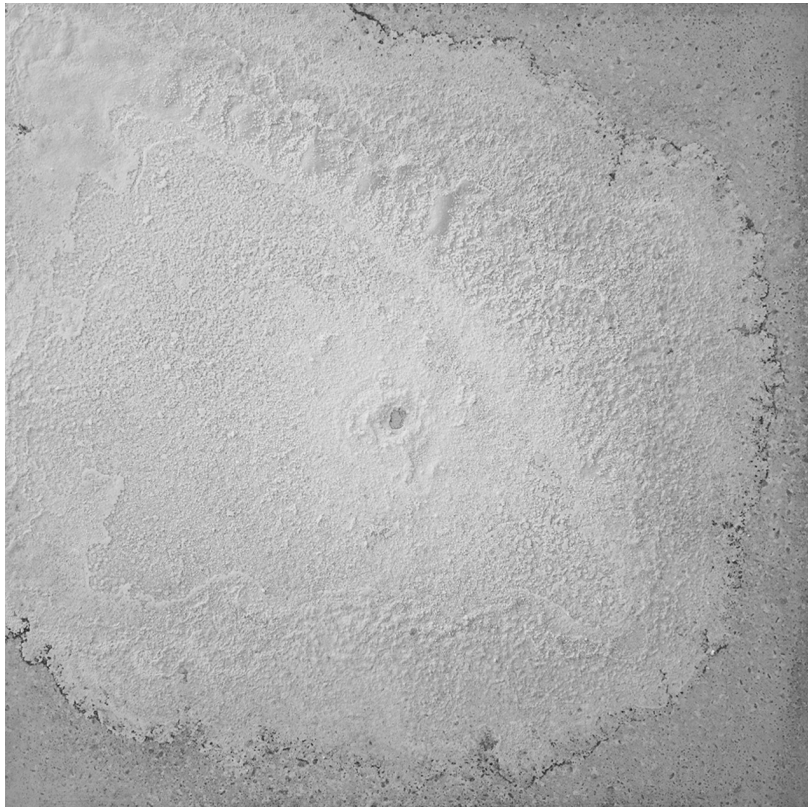


Salt 27.11.14–04.01.15. Pascal Stalder, Philipp Hagen, Thomas Müller, Willi Reutiman.
Kunstmuseum Winterthur.
Salt, water, plastic, wool, concrete. Dimensions variable, sheet 1

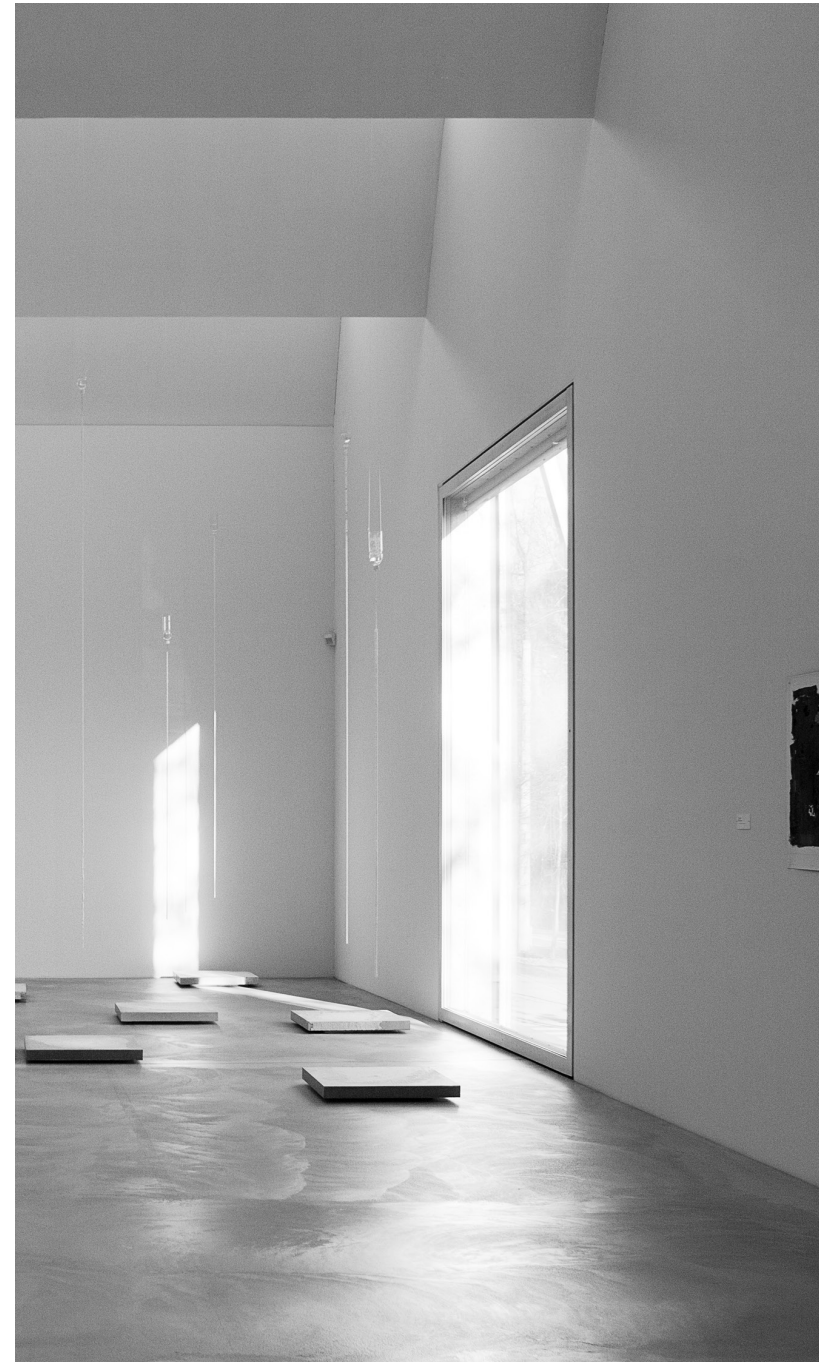
Fold, puncture and then arrange each sheet (entry) in order.



Front



Salt 27.11.14–04.01.15. Pascal Stalder, Philipp Hagen, Thomas Müller, Willi Reutiman.
Kunstmuseum Winterthur.
Salt, water, plastic, wool, concrete. Dimensions variable, sheet 3

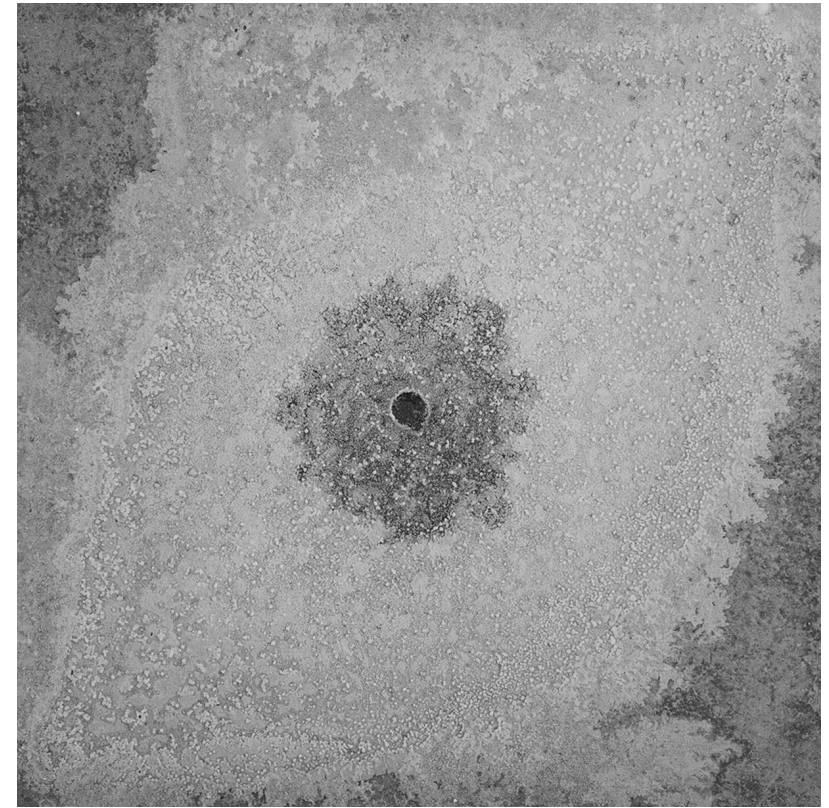


After tending to the installation for three weeks, one of the woolen threads tore near the plastic cap because Pascal Stalder had to unclog the hole in the cap with a needle too many times. The thread gradually weakened until it tore and the salt crystals fell to the ground.

Fold, puncture and then arrange each sheet (entry) in order.



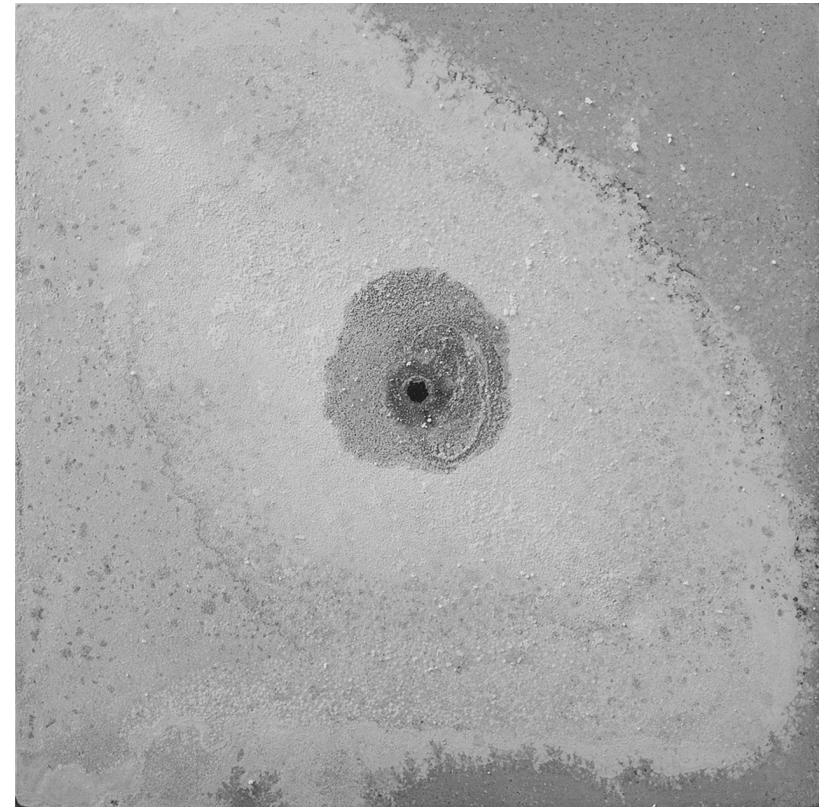
Front



Salt 27.11.14–04.01.15. Pascal Stalder, Philipp Hagen, Thomas Müller, Willi Reutiman. Kunstmuseum Winterthur.
Salt, water, plastic, wool, concrete. Dimensions variable, sheet 2



Salt 27.11.14–04.01.15. Pascal Stalder, Philipp Hagen, Thomas Müller, Willi Reutiman.
Kunstmuseum Winterthur.
Salt, water, plastic, wool, concrete. Dimensions variable, sheet 7



Salt 27.11.14–04.01.15. Pascal Stalder, Philipp Hagen, Thomas Müller, Willi Reutiman.
Kunstmuseum Winterthur.
Salt, water, plastic, wool, concrete. Dimensions variable, sheet 4

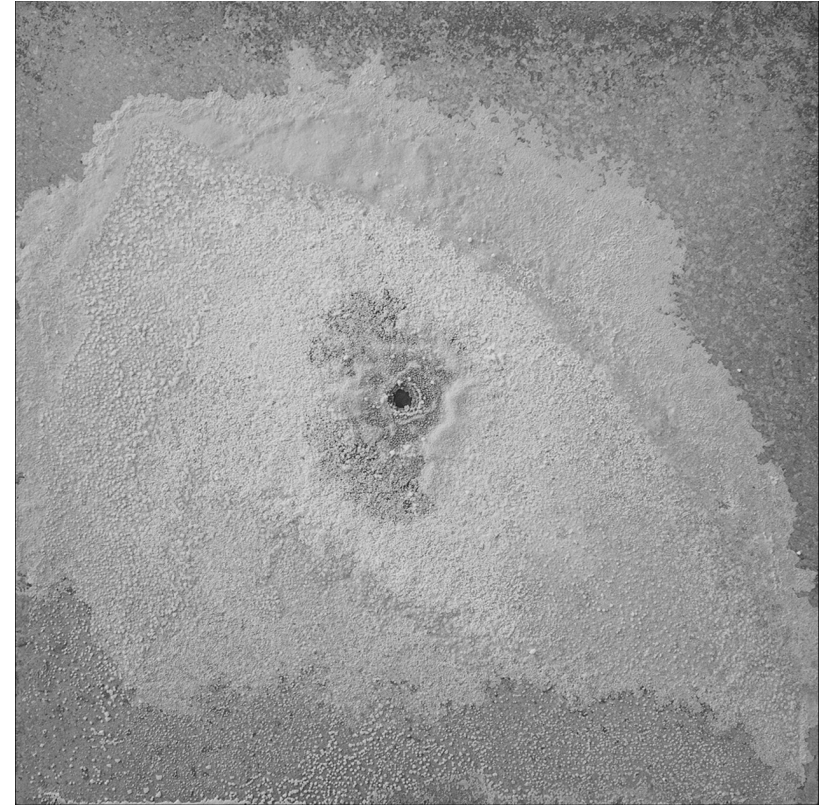


Salt 27.11.14–04.01.15. Pascal Stalder, Philipp Hagen, Thomas Müller, Willi Reutiman.
Kunstmuseum Winterthur.
Salt, water, plastic, wool, concrete. Dimensions variable, sheet 5

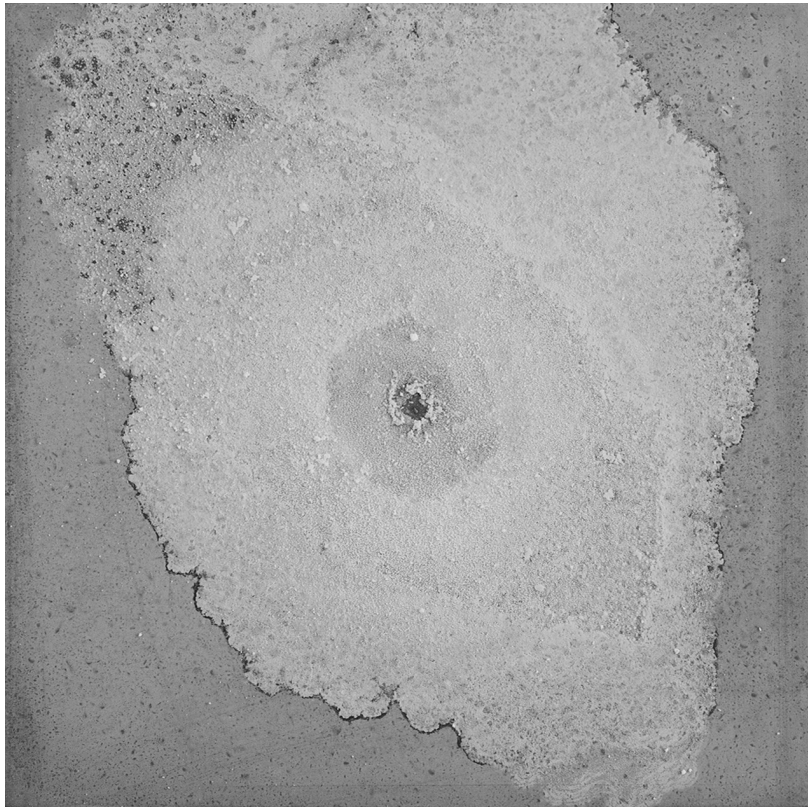
Fold, puncture and then arrange each sheet (entry) in order.



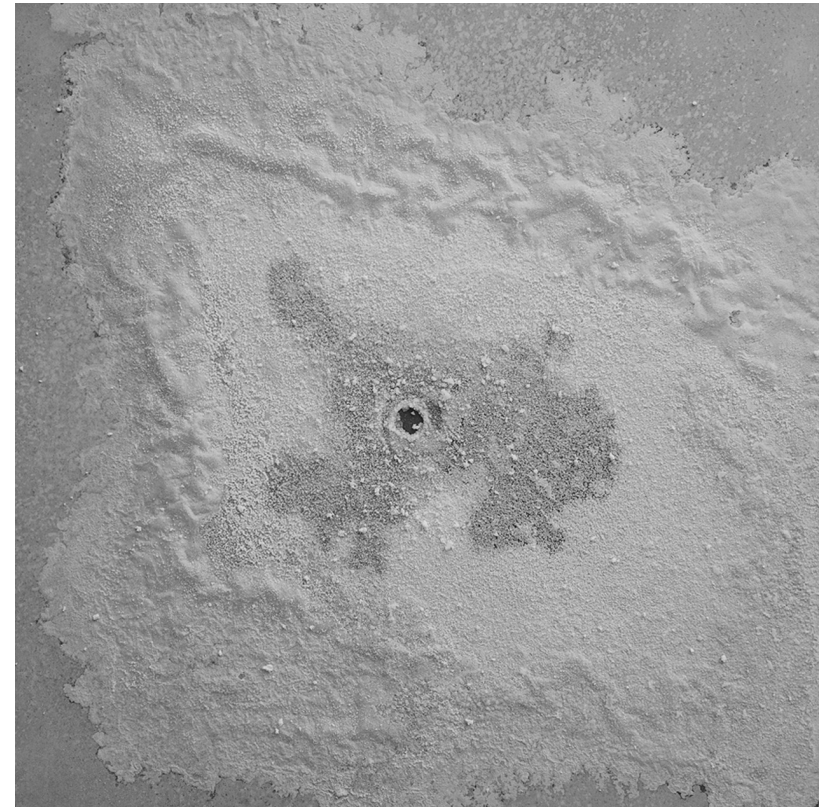
Front



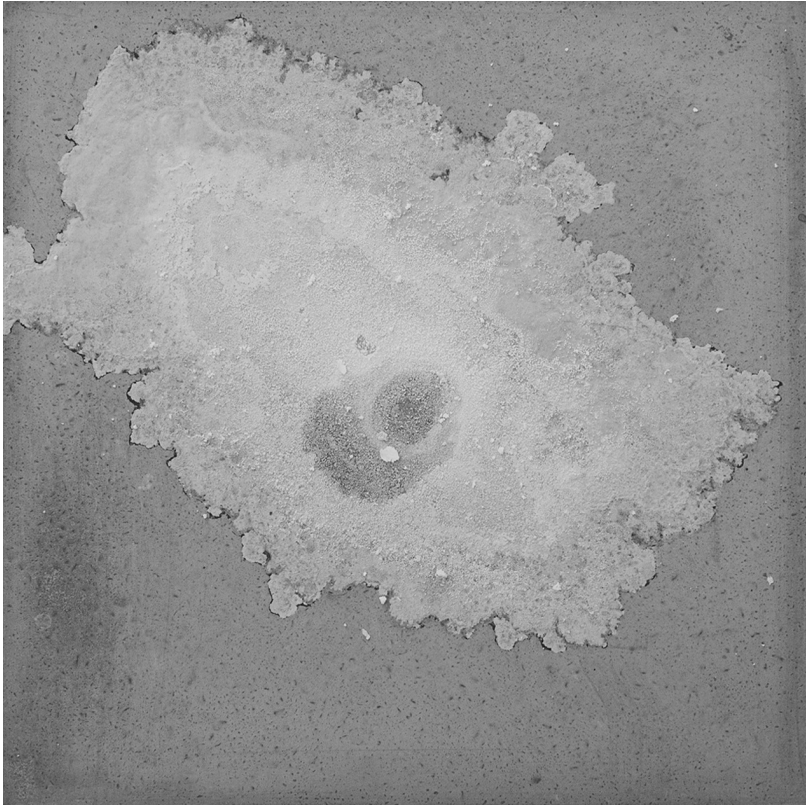
Salt 27.11.14–04.01.15. Pascal Stalder, Philipp Hagen, Thomas Müller, Willi Reutiman.
Kunstmuseum Winterthur.
Salt, water, plastic, wool, concrete. Dimensions variable, sheet 6



Salt 27.11.14–04.01.15. Pascal Stalder, Philipp Hagen, Thomas Müller, Willi Reutiman.
Kunstmuseum Winterthur.
Salt, water, plastic, wool, concrete. Dimensions variable, sheet 11



Salt 27.11.14–04.01.15. Pascal Stalder, Philipp Hagen, Thomas Müller, Willi Reutiman.
Kunstmuseum Winterthur.
Salt, water, plastic, wool, concrete. Dimensions variable, sheet 8



Fold, puncture and then arrange each sheet (entry) in order.



Salt 27.11.14–04.01.15. Pascal Stalder, Philipp Hagen, Thomas Müller, Willi Reutiman.
Kunstmuseum Winterthur.
Salt, water, plastic, wool, concrete. Dimensions variable, sheet 9

Front

Salt 27.11.14–04.01.15. Pascal Stalder, Philipp Hagen, Thomas Müller, Willi Reutiman.
Kunstmuseum Winterthur.
Salt, water, plastic, wool, concrete. Dimensions variable, sheet 10