



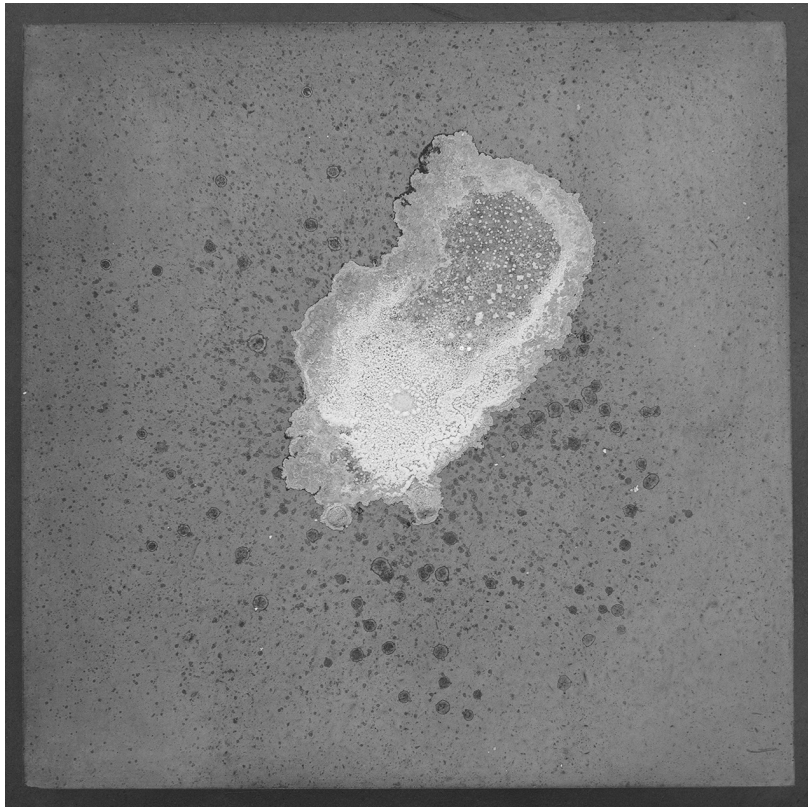


Salt | 14.09. – 3.10.16 | Nela Bunjevac, Patricia Bianchi, Love Stevenson,
Haus Konstruktiv, 2016
Salt, water, plastic, wool, concrete
Dimensions variable, sheet 1

Fold, puncture and then arrange each sheet (entry) in order.



Front



Salt | 14.09. – 3.10.16 | Nela Bunjevac, Patricia Bianchi, Love Stevenson,
Haus Konstruktiv, 2016
Salt, water, plastic, wool, concrete
Dimensions variable, sheet 3

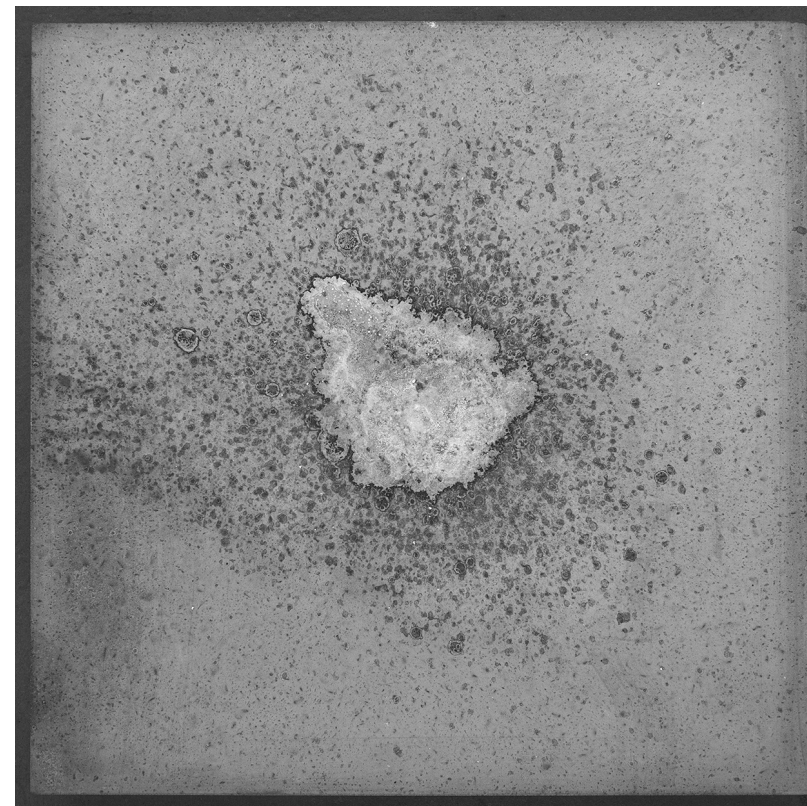


The exhibition space at Haus Konstruktiv is very dry and warm in early autumn. Thanks to this condition the saltcrystals grew super fast. A factor was also that we looked after the crystals almost every day.

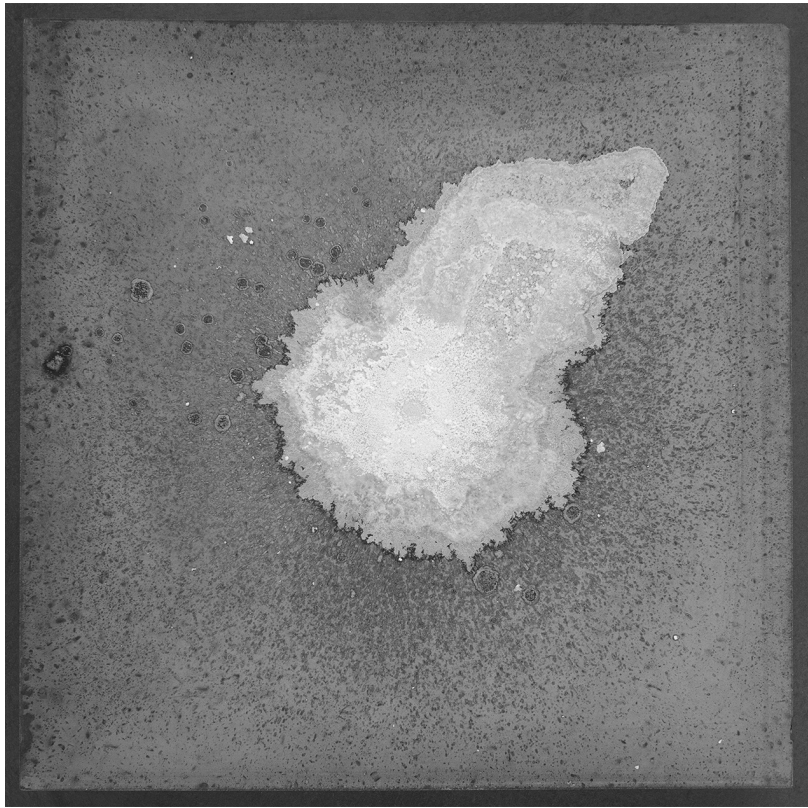
Fold, puncture and then arrange each sheet (entry) in order.



Front



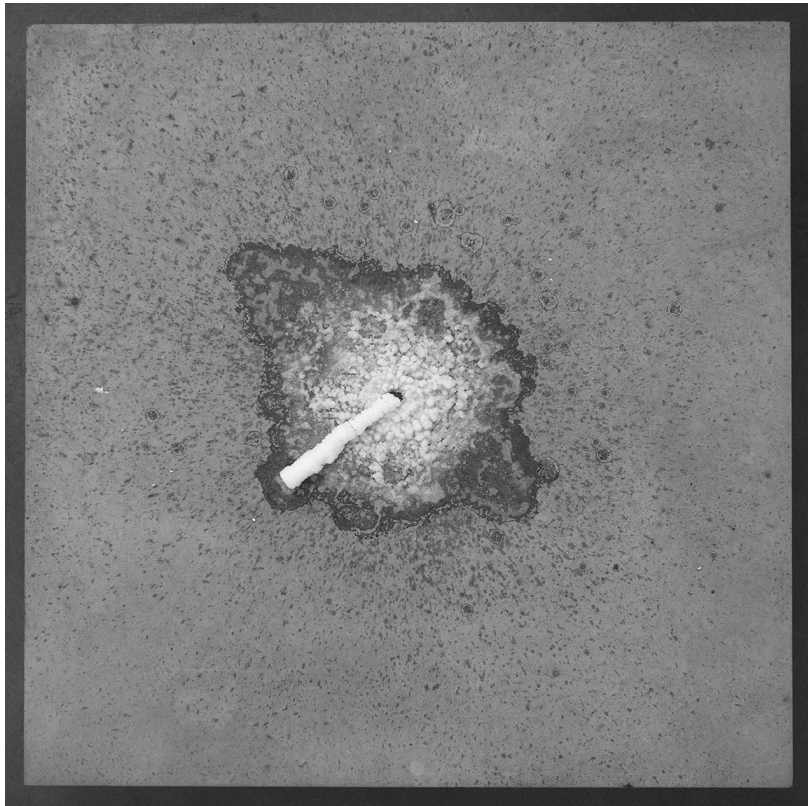
Salt | 14.09. – 3.10.16 | Nela Bunjevac, Patricia Bianchi, Love Stevenson,
Haus Konstruktiv, 2016
Salt, water, plastic, wool, concrete
Dimensions variable, sheet 2



Salt | 14.09. – 3.10.16 | Nela Bunjevac, Patricia Bianchi, Love Stevenson,
Haus Konstruktiv, 2016
Salt, water, plastic, wool, concrete
Dimensions variable, sheet 7



Salt | 14.09. – 3.10.16 | Nela Bunjevac, Patricia Bianchi, Love Stevenson,
Haus Konstruktiv, 2016
Salt, water, plastic, wool, concrete
Dimensions variable, sheet 4

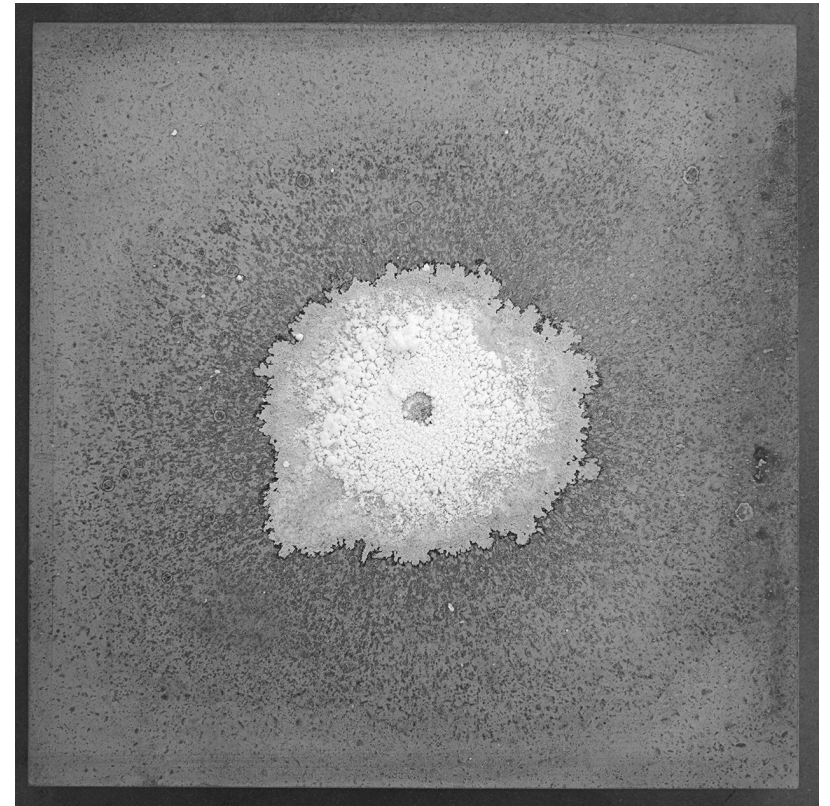


Salt | 14.09. – 3.10.16 | Nela Bunjevac, Patricia Bianchi, Love Stevenson,
Haus Konstruktiv, 2016
Salt, water, plastic, wool, concrete
Dimensions variable, sheet 5

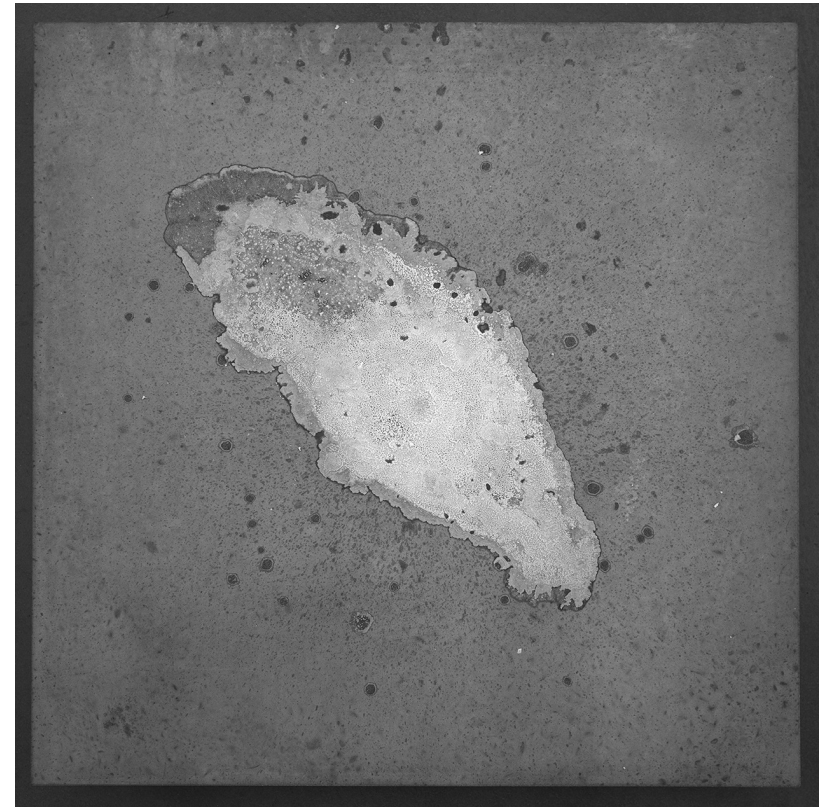
Fold, puncture and then arrange each sheet (entry) in order.



Front



Salt | 14.09. – 3.10.16 | Nela Bunjevac, Patricia Bianchi, Love Stevenson,
Haus Konstruktiv, 2016
Salt, water, plastic, wool, concrete
Dimensions variable, sheet 6



Salt | 14.09. – 3.10.16 | Nela Bunjevac, Patricia Bianchi, Love Stevenson,
Haus Konstruktiv, 2016
Salt, water, plastic, wool, concrete
Dimensions variable, sheet 8

Fold, puncture and then arrange each sheet (entry) in order.



Front